

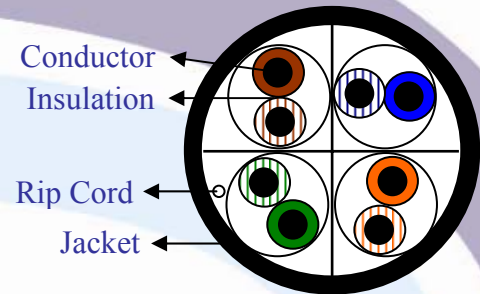
# OZLINX Category 6 UTP Cable Data Sheet

## Description:

The OZLINX CAT6 cable is high bandwidth and high performance cable for applications at gigabit speed and full duplex transmissions. OZLINX CAT6 cables have a guaranteed performance; exceeds the Category 6 performance requirements and provides positive PSACR up to 250MHz for bandwidth requirement in the future.

## Product Features:

- Engineered for smaller overall diameter and ease of installation.
- Positive PSACR up to 250MHz for future bandwidth requirements.
- 23 AWG, Twisted-Pair, Solid Bare Copper conductors, PE insulation, rip cord, industrial grade PVC / LSZH (Low Smoke Zero Halogen) outer jacket, sequential marking at one meter intervals.



## Conductor:

- Number of Pairs: 4
- Total Number of Conductors: 8
- Stranding: Solid
- Conductor Diameter: 23 AWG
- Conductor Material: BC – Bare Copper

## Pair Color Code Chart:

Pair	Color Chart	
1	Blue White	Blue
2	Orange White	Orange
3	Green White	Green
4	Brown White	Brown

## Outer Jacket:

- Outer Shield Material: Unshielded
- Outer Jacket Material: PVC / LSZH (Low Smoke Zero Halogen)
- Outer Jacket Ripcord: Yes
- Overall Nominal Diameter: 5.9mm/0.233in.

## Cable Properties:

- Minimum Bending Radius Installed: 10 x D
- Maximum Tensile Load, Installation: 100N
- Maximum Tensile Load, Installed: No Stretch

## Electrical Characteristics:

- Spark Test: 2,000±250 VOC
- Dielectric Strength: 1,000V dc/3 seconds
- Insulation Resistance: Min. 150MΩ/KM
- Conductor Resistance: Max. 9.38 Ω/100m-at-20°C
- Resistance Unbalance: Max. 2%
- Capacitance Unbalance: Max. 330pF/100m
- Mutual Capacitance: Max. 560pF/100m

## Mechanical Characteristics:

- Operating Temperature Range: -25°C To +70°C
- Installation Temperature Range: -10°C To +70°C

## Agency Compliances:

- UL and cUL
- TIA/EIA-568-B.2-1 Specifications
- TIA/EIA-862 (Building Automation)
- ISO/IEC 11801 Ed. 2.0 (Class E)
- ACMA
- PDI Certified

## Test Parameters & Results

OZLINX CAT6 UTP cable tested for up to 250MHz performance.

<i>Freq</i>	<i>Impedance Ω</i>	<i>Attenuation dB/100</i>	<i>Return Loss dB</i>	<i>NEXT dB</i>	<i>PSNEXT dB</i>	<i>ELFEX dB/100</i>	<i>PSELFEXT dB/100</i>
772KHz	100 ± 15	1.84	23.0	76.0	74.0	70.8	67.0
1MHz	100 ± 15	2.04	23.0	74.30	72.3	67.8	64.8
4MHz	100 ± 15	3.81	26.0	65.3	63.3	55.8	52.8
8MHz	100 ± 15	5.35	27.5	60.8	58.8	49.7	46.7
10MHz	100 ± 15	5.99	28.0	59.3	57.3	47.8	44.8
16MHz	100 ± 15	7.60	28.0	56.2	54.2	43.7	40.7
20MHz	100 ± 15	8.52	28.0	54.8	52.8	41.8	38.8
25MHz	100 ± 15	9.57	27.2	53.3	51.3	39.8	36.8
31.25MHz	100 ± 15	10.74	26.3	51.9	49.9	37.9	34.9
62.5MHz	100 ± 15	15.48	24.5	47.4	45.4	31.9	28.9
100MHz	100 ± 15	19.92	23.1	44.3	42.3	27.8	24.8
125MHz	100 ± 22	22.49	22.4	42.8	40.8	24.9	22.9
200MHz	100 ± 22	29.15	21.0	39.8	37.8	21.8	18.8
250MHz	100 ± 32	33.04	20.3	38.3	36.3	19.8	16.8

## Ordering Information:

<i>S. #</i>	<i>Part Number</i>	<i>Description</i>	<i>Color</i>	<i>Unit</i>	<i>Packaging Details</i>
1	OZ276215-CAT6	OZLINX UTP CAT6 Solid Bare Copper Cable Reel (White Color) 23AWG, PVC (1 Reel = 305 meters)	White	Reel	305m/Reel
2	OZ276216-CAT6	OZLINX UTP CAT6 Solid Bare Copper Cable Reel (White Color) 23AWG, LSZH (1 Reel = 305 meters)	White	Reel	305m/Reel

## Description:

The ultimate flexibility of an OZLINX system is due to the use of OZLINX Cat6 Patch Panels. These panels use the same modules identical to the outlet to the closet end of the cable. This eliminates wiring errors and provides better usability of the materials with the ease of installation. OZLINX patch panel allows re-arrangement of the modules in the patch panel without disconnecting and re-terminating the cables.

The OZLINX CAT6 Shuttered RJ45 Module/ Jack Patch Panel is a fully loaded patch panel using CAT6 Shuttered Modules/ Jack. The OZLINX CAT6 cable is high bandwidth and high performance cable for applications at gigabit speed and full duplex transmissions. OZLINX CAT6 patch panel has a guaranteed performance; exceeds the Category 6 performance requirements; NEXT, FEXT, attenuation and return loss have been set to guarantee transmission performance up to 300 MHz. For module/ jack detailed specification please refer RJ45 Module/ Jack section.



P/N: OZ276225-PP6

## Characteristics:

- Usable bandwidth of up to 300MHz guarantees extra overhead beyond Category 6 standard.
- Unmatched transmission performance supporting data rates of up to 4.8Gbps; providing the highest bit rate for UTP cabling in the industry.
- Modules holes are truly backward compatible with CAT5e Module/ Jack to protect cabling investment.
- Easy to read 568A/B color scheme prevents termination errors.
- Panels are available in 24 -port configurations for optimization of rack installation.
- Robust and installer-friendly design to reduce installation and operating costs.
- Powder paint finish.
- Compatible with standard 19 in. equipment racks, cabinets or wall mount brackets.
- Integrated rear cable management bar to accommodate any installation need.
- Velcro ties included to facilitate proper and secured installation of high performance CAT6 cables.
- Large front labeling space facilitating custom port identification.
- Enclosure type: Modular
- Number of Ports: 24

## Materials & Dimensions:

- Panel: steel, 16 gauge, powder paint finish, black
- Modules: fire-retardant plastic, UL94V-0.
- Transmission characteristics exceeds ANSI/TIA/EIA-568-B Category 6 standard.
- Dimensions (H x W x D): 1U panel, 24-port (with modules and back plate): 1.75 x 19 x 3.9 inch

## Durability:

- Modular Jack – 750 mating cycles
- 110 Blocks – 200 termination cycle
- Connector Gold Plating – 50 micro inch

## Applications:

- Horizontal distribution or equipment terminations in Telecommunications Rooms OR Interconnection terminations in consolidation points.

## Packaging:

- Individually packaged in a cardboard box, including: cable management bar with Velcro ties, 2 sets of mounting screws (4x10-32 and 4x12-24 Phillips/slotted).

### Mechanical Characteristics:

- Operating Temperature Range: -25°C To +60°C
- Installation Temperature Range: -10°C To +60°C

### Agency Compliances:

- UL and cUL
- TIA/EIA-568-B.2-1 Specifications
- TIA/EIA-862 (Building Automation)
- ISO/IEC 11801 Ed. 2.0 (Class E)
- ACMA
- PDI Certified

### Ordering Information:

S. #	Part Number	Description	Color	Unit	Packaging Details
1	OZ276224-BLANK	OZLINX Unscreened 24 Ports Modular Blank Patch Panel	Black	No	1/Box
2	OZ276225-PP6	OZLINX Unscreened CAT6 24 Ports Modular Patch Panel with Shuttered RJ45 Modules	Black	No	1/Box
3	OZ266227-B110	OZLINX 110 Cross Connect 96 Pair Wall Mount Block with Legs- CAT6	Off-White	No	1/Box
4	OZ266227-B110R	OZLINX 110 Cross Connect 96 Pair Rack Mount Block - CAT6	Black	No	1/Box
5	OZ266227-C4P	OZLINX 4 Pair Connection Module for 110 Cross Connect Block - CAT6 (Pk: 24)	Off-White	Pk	24/Pk

# OZLINX Category 6 RJ45 Shuttered Module/Jack Data Sheet

## Description:

OZLINX CAT6 shuttered RJ45 Module/Jack is built for optimum performance and gives guaranteed performance; exceeds the Category 6 performance requirements. The shuttered module/jack is protected from dust exposure and can be extracted from the face plate or patch panel with ease, re-terminated and re-inserted in seconds.



P/N: OZ276212-CAT6

## Characteristics:

- OZLINX shuttered module/jack is future proof and can be used with all the models of OZLINX patch panels and face plates.
- Unmatched transmission performance supporting data rates of up to 4.8Gbps; providing the highest bit rate for UTP cabling in the industry.
- Easy to read 568A/B color scheme prevents termination errors.
- Robust and installer-friendly design to reduce installation and operating costs.
- Operating Temperature Range: -25°C To +60°C
- Installation Temperature Range: -10°C To +60°C
- Modular Jack – 750 mating cycles
- 110 Blocks – 200 termination cycle
- Wire Diameter – 0.5mm to 1.6mm
- Gold Plating – 50 micro inch
- Connector Material – Phosphor Bronze with Nickel Plating

## Applications:

- Horizontal distribution or equipment terminations in Telecommunications Rooms OR Interconnection terminations in consolidation points.

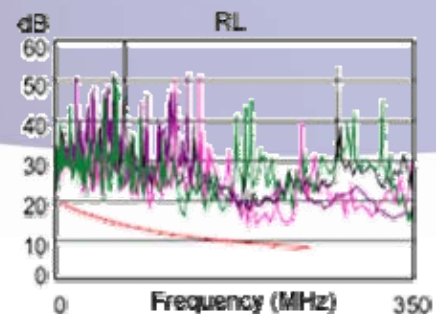
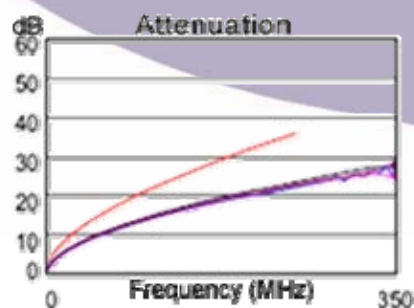
## Packaging:

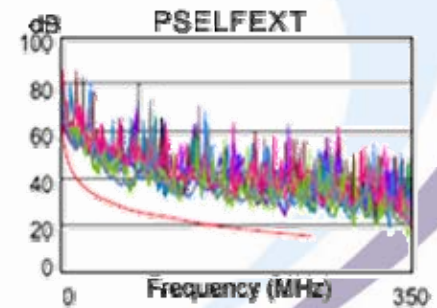
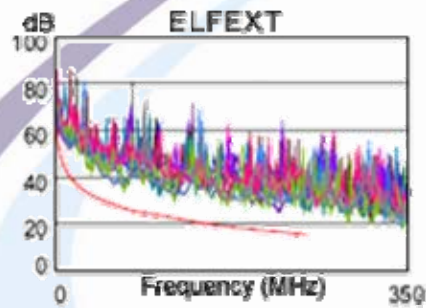
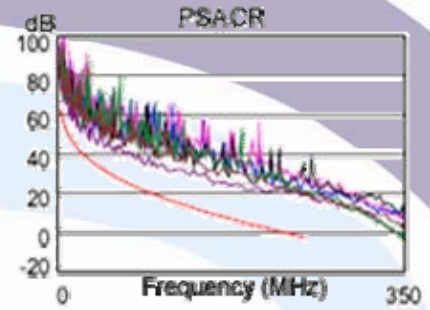
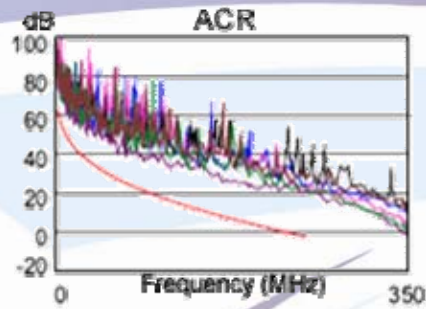
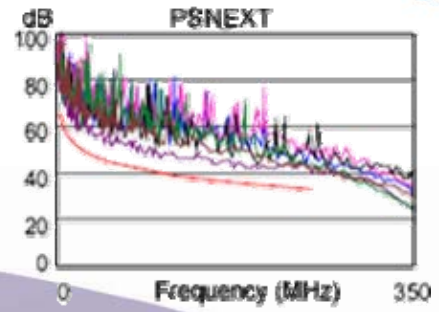
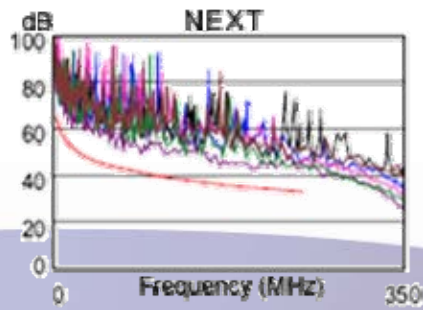
- Packed with a quantity of 50 jacks in a box; each jack packed individually in a plastic bag.

## Agency Compliances:

- UL and cUL
- TIA/EIA-568-B.2-1 Specifications
- TIA/EIA-862 (Building Automation)
- ISO/IEC 11801 Ed. 2.0 (Class E)
- ACMA
- PDI Certified

## Test Parameters & Results:



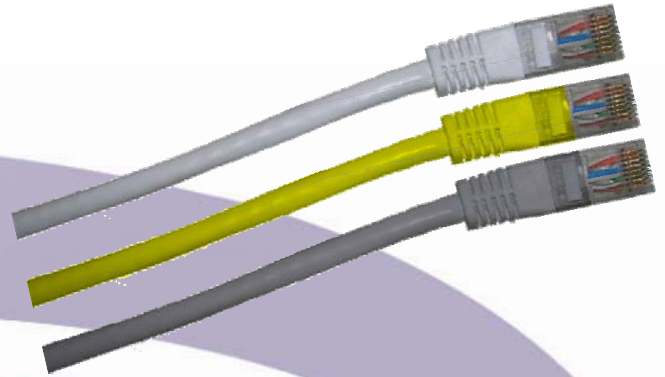


S. #	Part Number	Description	Color	Unit	Packaging Details
1	OZ276211-CAT6	OZLINX Unscreened CAT6 Shuttered RJ45 Module/Jack (1 Box = 50 Jacks)	White	No	50/Box
2	OZ276212-CAT6	OZLINX Unscreened CAT6 Shuttered RJ45 Module/Jack	White	No	1/Pk

**Ordering Information:**

## Description:

OZLINX Patch Cords increase the proven versatility of the expanded OZLINX family of connectivity products. These Patch Cords allow for high-density connections, coupled with flexibility for cost-effective installation and administration. Plug-and-go installation and rearrangement of patch cords do not require any special tools or training. The OZLINX Patch Cords and connectors provide a mated performance that exceeds Category 6 requirements.



OZLINX Patch Cords are available in different configurations i.e. 1M, 2M, 3M, 5M, & 10M lengths for use between equipment and distribution fields. These cords are used to easily interconnect equipment directly into the distribution field.

## Product Features:

- OZLINX CAT6 UTP patch cords are terminated on both ends with unscreened RJ45 plugs and a molded bend limiting boot.
- Beyond Category 6 performance providing additional margin to support gigabit applications.
- Backward-compatible plug for high density installation and to reduce installation space requirements.
- OZLINX Patch Cords are 4-pair 24AWG UTP cords
- These patch cords provide channel bandwidths of up to 300 MHz
- New and improved compact design to improve connector and plug accessibility.
- Robust and installer-friendly plug design with proven contact reliability to reduce network operating costs.

## Materials:

- Plug Housing: UL 94 V0-rate polycarbonate
- Contact Plating: 50 micro inch gold plated

## Electrical Characteristics:

- Current Rating: 1.5 A (Maximum) @ 25°C
- Voltage Rating: 150 VAC (Maximum)
- Dielectric with standing Voltage: 1000 VAC, 1 min. (60 Hz)
- Insulation Resistance: 500 MO (minimum)

## Mechanical Characteristics:

- Plug Tolerances and Dimensions: Compliant with IEC 60603-7 requirements

## Patch Cord Characteristics:

- Inner conductor diameter: Stranded copper 24AWG
- Number of pairs: 4
- Screen Type Inner/Outer: Non
- Outer Jacket: PVC or LSZH
- Nominal diameter: 5.6mm
- Minimum bend radius: 25mm

## Applications:

- Horizontal distribution or equipment terminations in telecommunications rooms and equipment rooms.
- Interconnection terminations in consolidation points.

## Mechanical Characteristics:

- Operating Temperature Range: -25°C To +60°C
- Installation Temperature Range: -10°C To +60°C

## Agency Compliances:

- UL and cUL
- TIA/EIA-568-B.2-1 Specifications
- TIA/EIA-862 (Building Automation)
- ISO/IEC 11801 Ed. 2.0 (Class E)
- ACMA
- PDI Certified

### Ordering Information:

S. #	Part Number	Description	Color	Unit	Packaging Details
1	OZ27PV01-PC6W	OZLINX Standard 1 Meter UTP CAT6 Patch Cord	White	No	1/Pk
2	OZ27PV01-PC6Y	OZLINX Standard 1 Meter UTP CAT6 Patch Cord	Yellow	No	1/Pk
3	OZ27PV02-PC6W	OZLINX Standard 2 Meters UTP CAT6 Patch Cord	White	No	1/Pk
4	OZ27PV02-PC6B	OZLINX Standard 2 Meters UTP CAT6 Patch Cord	Blue	No	1/Pk
5	OZ27PV03-PC6W	OZLINX Standard 3 Meters UTP CAT6 Patch Cord	White	No	1/Pk
6	OZ27PV03-PC6W	OZLINX Standard 3 Meters UTP CAT6 Patch Cord	White	No	1/Pk
7	OZ27PV05-PC6W	OZLINX Standard 5 Meters UTP CAT6 Patch Cord	White	No	1/Pk
8	OZ27LS01-PC6W	OZLINX Standard, 1 Meter UTP CAT6 Patch Cord, LSZH	White	No	1/Pk
9	OZ27LS02-PC6W	OZLINX Standard, 2 Meters UTP CAT6 Patch Cord, LSZH	White	No	1/Pk
10	OZ27LS03-PC6W	OZLINX Standard, 3 Meters UTP CAT6 Patch Cord, LSZH	White	No	1/Pk
11	OZ27LS05-PC6W	OZLINX Standard, 5 Meters UTP CAT6 Patch Cord, LSZH	White	No	1/Pk

**Note:**

**OZ27YYNN-PC6X**

**X** = color code (**W**=White, **Y**=Yellow, **B**=Blue, **G**=Green, **R**=Red) other colors can be supplied upon request

**YY**= Jacket Type (**LS** = LSZH Low Smoke Zero Halogen, **PV** = PVCS)

**NN** = Length (**01**= 1 meter, **02**= 2 meters, **03**= 3 meters, ... etc)

**Head Office**

21 Ayton Street, Sunshine North, Melbourne, VIC3020, Australia  
 Tel: +61-3-931 2440 Fax: +61-3-931 2441