

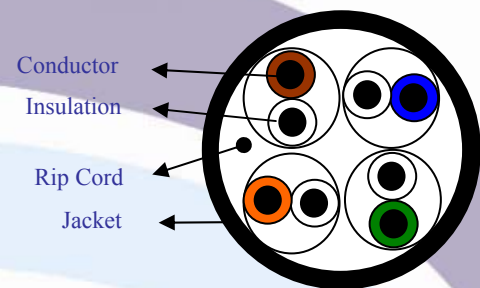
OZLINX Category 5e UTP Cable Data Sheet

Description:

OZLINX CAT5e cable has a guaranteed performance; exceeds the Category 5e performance requirements and provides positive PSACR up to 155MHz for bandwidth requirement in the future.

Product Features:

- Tape design engineered for smaller overall diameter and ease of installation.
- Positive PSACR up to 155MHz for future bandwidth requirements.
- 24 AWG, Twisted-Pair, Solid Bare Copper conductors, PE insulation, rip cord, industrial grade PVC or LSZH Low Smoke Zero Halogen outer jacket, sequential marking at one meter intervals.



Conductor:

- Number of Pairs: 4
- Total Number of Conductors: 8
- Stranding: Solid
- Conductor Diameter: 24 AWG
- Conductor Material: BC – Bare Copper

Pair Color Code Chart:

| Pair | Color Chart | |
|------|--------------|--------|
| 1 | Brown White | Brown |
| 2 | Orange White | Orange |
| 3 | Green White | Green |
| 4 | Blue White | Blue |

Outer Jacket:

- Outer Shield Material: Unshielded
- Outer Jacket Material: PVC or LSZH (Low Smoke Zero Halogen)
- Outer Jacket Ripcord: Yes
- Overall Nominal Diameter: 5.0 ± 0.2.

Cable Properties:

- Minimum Bending Radius Installed: 10 x D
- Maximum Tensile Load, Installation: 100N
- Maximum Tensile Load, Installed: No Stretch

Electrical Characteristics:

- Spark Test: 2,000±250 VOC
- Dielectric Strength: 1,000V dc/3 seconds
- Insulation Resistance: Min. 150MΩ/KM
- Conductor Resistance: Max. 9.38 Ω/100m-at-20°C
- Resistance Unbalance: Max. 2%
- Capacitance Unbalance: Max. 330pF/100m
- Mutual Capacitance: Max. 560pF/100m
- Impedance (0.772-100MHz): 100Ω ± 15

Agency Compliances:

- UL and cUL
- TIA/EIA-568-B.2
- ISO/IEC 11801 Ed. 2.0 (Class E)
- Third Party Certification: PDI Certified

Test Parameters & Results

OZLINX CAT5e UTP cable tested for up to 155MHz performance.

| <i>Freq</i> | <i>Impedance</i> Ω | <i>Attenuation</i> dB/100 | <i>Return</i> <i>Loss</i> dB | <i>NEXT</i> dB | <i>PSNEXT</i> dB | <i>ELFEX</i> dB/100 | <i>PSELFEXT</i> dB/100 |
|-------------|------------------------------|------------------------------|------------------------------------|-------------------|---------------------|------------------------|---------------------------|
| 772KHz | 100 ± 15 | 1.8 | 20.0 | 67.0 | 64.0 | 66.0 | 63.0 |
| 1MHz | 100 ± 15 | 2.0 | 20.0 | 65.3 | 62.3 | 63.8 | 60.7 |
| 4MHz | 100 ± 15 | 4.1 | 23.0 | 56.3 | 53.3 | 51.7 | 48.7 |
| 10MHz | 100 ± 15 | 6.5 | 25.0 | 50.3 | 47.3 | 43.8 | 40.7 |
| 16MHz | 100 ± 15 | 8.2 | 25.0 | 47.3 | 44.2 | 39.7 | 36.7 |
| 20MHz | 100 ± 15 | 9.3 | 25.0 | 45.8 | 42.8 | 37.7 | 34.7 |
| 25MHz | 100 ± 15 | 10.4 | 24.3 | 44.3 | 41.3 | 35.8 | 32.8 |
| 31.25MHz | 100 ± 15 | 11.7 | 24.3 | 42.9 | 39.9 | 33.9 | 30.8 |
| 62.5MHz | 100 ± 15 | 17.0 | 22.0 | 38.4 | 35.4 | 27.8 | 24.8 |
| 100MHz | 100 ± 15 | 22.0 | 20.1 | 35.3 | 32.3 | 23.8 | 20.7 |
| 155MHz | 100 ± 22 | 31.5 | 18.0 | 32.3 | 29.5 | 21.0 | 18.5 |

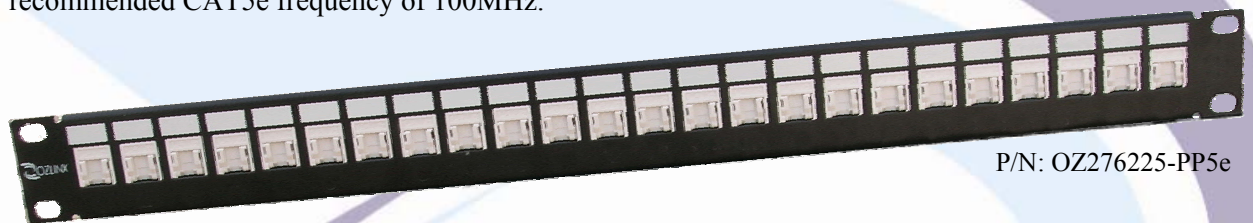
Ordering Information:

| <i>S. #</i> | <i>Part Number</i> | <i>Description</i> | <i>Color</i> | <i>Unit</i> | <i>Packaging</i> <i>Details</i> |
|-------------|--------------------|--|--------------|-------------|------------------------------------|
| 1 | OZ276215-CAT5E | OZLINX UTP CAT5e Solid Bare Copper Cable Reel 24AWG, PVC (1 Reel = 305 meters) | White | Reel | 305m/Reel |
| 2 | OZ276216-CAT5E | OZLINX UTP CAT5e Solid Bare Copper Cable Reel 24AWG, LSZH (1 Reel = 305 meters) | White | Reel | 305m/Reel |

Description:

The ultimate flexibility of an OZLINX system is due to the use of OZLINX Cat5e Patch Panels. These panels use the same modules identical to the outlet to the closet end of the cable. This eliminates wiring errors and provides better usability of the materials with the ease of installation. OZLINX patch panel allows re-arrangement of the modules in the patch panel without disconnecting and re-terminating the cables.

The OZLINX CAT5e Shuttered RJ45 Module/Jack Patch Panel is a fully loaded patch panel using CAT5e Shuttered Modules/Jack. OZLINX CAT5e patch panel has a guaranteed performance; exceeds the CAT5e performance requirements (TIA/EIA-568-A-5), With CAT6 90 meters cable, OZLINX CAT5e Patch Panel with shuttered RJ45 modules/jacks are capable of reliable performance at two and a half times the recommended CAT5e frequency of 100MHz.



P/N: OZ276225-PP5e

Characteristics:

- Unmatched transmission performance supporting data rates of up to 1Gbps; providing the highest bit rate for UTP cabling in the industry.
- Modules holes are truly backward compatible with CAT5e Module/Jack to protect cabling investment.
- Easy to read 568A/B color scheme prevents termination errors.
- Panels are available in 24 -port configurations for optimization of rack installation.
- Robust and installer-friendly design to reduce installation and operating costs.
- Powder paint finish.
- Compatible with standard 19 in. equipment racks, cabinets or wall mount brackets.
- Integrated rear cable management bar to accommodate any installation need.
- Velcro ties included to facilitate proper and secured installation of high performance CAT6 cables.
- Large front labeling space facilitating custom port identification.
- Enclosure type: Modular
- Number of Ports: 24

Materials & Dimensions:

- Panel: steel, 16 gauge, powder paint finish, black
- Modules: fire-retardant plastic, UL94V-0.
- Transmission characteristics exceeds ANSI/TIA/EIA-568-A-5 Category 5e standard.
- Dimensions (H x W x D): 1U panel, 24-port (with modules and back plate): 1.75 x 19 x 3.9 inch

Durability:

- Modular Jack – 500+ mating cycles
- 110 Blocks – 200 termination cycle
- Connector Gold Plating – 50 micro inch

Applications:

- Horizontal distribution or equipment terminations in Telecommunications Rooms OR Interconnection terminations in consolidation points.

Packaging:

- Individually packaged in a cardboard box, including: cable management bar with Velcro ties, 2 sets of mounting screws (4x10-32 and 4x12-24 Phillips/slotted).

Mechanical Characteristics:

- Operating Temperature Range: -25°C To +60°C
- Installation Temperature Range: -10°C To +60°C

Agency Compliances:

- UL and cUL
- TIA/EIA-568-B.2
- IEC/ISO 11801
- Third Party Certification: PDI Certified

Ordering Information:

| S. # | Part Number | Description | Color | Unit | Packaging Details |
|------|----------------|--|-----------|------|-------------------|
| 1 | OZ276215-CAT5E | OZLINX UTP CAT5e Solid Bare Copper Cable Reel 24AWG, PVC (1 Reel = 305 meters) | White | Reel | 305m/Reel |
| 2 | OZ266225-B110 | OZLINX 110 Cross Connect 100 Pair Wall Mount Block with Legs | Off White | No | 1/Box |
| 3 | OZ26655-B110R | OZLINX 110 Cross Connect 100 Pair Rack Mount Block | Black | No | 1/Box |
| 4 | OZ266225-CM | OZLINX Connection Module (4Px20 & 5Px4) for 110 Cross Connect Block (Pk: 24) | Off White | Pack | 24/Pk |
| 5 | OZ276261-CO | OZLINX Cable Organizer 1U Huck Type with Cover (Black) | Black | No | 1/Box |

Description:

OZLINX CAT5e shuttered RJ45 Module/Jack exceeds the Category 5e performance requirements (TIA/EIA-568-A-5). With CAT6 90 meters cable, OZLINX CAT5e shuttered module/jack are capable of reliable performance at two and a half times the recommended CAT5e frequency of 100MHz.



P/N: OZ276220-CAT5e

Each module/jack includes 110-type IDC straight-back termination with strain relief caps, and comes standard with 50µ inch gold plating on the module/jack contacts. The shuttered module/jack is protected from dust exposure and can be extracted from the face plate or patch panel with ease, re-terminated and re-inserted in seconds.

Characteristics:

- OZLINX shuttered module/jack is future proof and can be used with all the models of OZLINX patch panels and face plates.
- Unmatched transmission performance exceeding the TIA/EIA-568-A-5 requirements
- Highest bit rate for UTP cabling in the industry.
- Easy to read 568A/B color scheme prevents termination errors.
- Robust and installer-friendly design to reduce installation and operating costs.
- Operating Temperature Range: -25°C To +60°C
- Installation Temperature Range: -10°C To +60°C
- Modular Jack – 500+ mating cycles
- Current Rating – 1.5 Amp max.
- 110 Blocks – 200 termination cycle
- Wire Diameter – 0.5mm to 1.6mm
- Gold Plating – 50 micro inch
- Connector Material – Phosphor Bronze with Nickel Plating

Applications:

- Horizontal distribution or equipment terminations in Telecommunications Rooms OR Interconnection terminations in consolidation points.

Packaging:

- Packed with a quantity of 20 jacks in a plastic bag.
- OR
- Individually packed in a plastic bag.

Agency Compliances:

- UL and cUL
- TIA/EIA-568-B.2
- TIA/EIA-862 (Building Automation)
- ISO/IEC 11801
- Third Party Certification: PDI Certified

Test Parameters & Results:

| PASS | Worst Margin | | Worst Value | |
|--------------------|--------------|-------|-------------|-------|
| | MAIN | SR | MAIN | SR |
| Worst Pair | 36-45 | 12-45 | 36-45 | 12-36 |
| NEXT (dB) | 38.6 | 41.3 | 38.6 | 41.2 |
| Frequency (MHz) | 249.0 | 237.5 | 249.0 | 249.0 |
| Limit (DB) | 33.1 | 33.5 | 33.1 | 33.1 |
| Worst Pair | 45 | 36 | 45 | 36 |
| PSNEXT (dB) | 35.9 | 40.2 | 35.9 | 38.0 |
| Frequency (MHz) | 244.5 | 164.0 | 249.5 | 249.5 |
| Limit (dB) | 30.3 | 32.5 | 30.2 | 30.2 |

| PASS | Worst Margin | | Worst Value | |
|-----------------|--------------|-------|-------------|-------|
| | MAIN | SR | MAIN | SR |
| Worst Pair | 12 | 78 | 12 | 12 |
| RL (dB) | 16.8 | 16.3 | 14.7 | 14.6 |
| Frequency (MHz) | 70.8 | 106.0 | 213.5 | 224.5 |
| Limit (DB) | 13.5 | 11.8 | 8.7 | 8.5 |

| PASS | Worst Margin | | Worst Value | |
|-------------------|--------------|-------|-------------|-------|
| | MAIN | SR | MAIN | SR |
| Worst Pair | 12-78 | 36-45 | 36-45 | 56-45 |
| ACR (dB) | 65.2 | 37.2 | 11.5 | 14.1 |
| Frequency (MHz) | 7.2 | 66.4 | 249.0 | 250.0 |
| Limit (DB) | 53.6 | 25.9 | -2.8 | -2.9 |
| Worst Pair | 36 | 12 | 45 | 36 |
| PSACR (dB) | 61.7 | 56.4 | 8.7 | 11.1 |
| Frequency (MHz) | 8.4 | 14.3 | 247.5 | 249.5 |
| Limit (dB) | 49.6 | 43.9 | -5.6 | -5.8 |

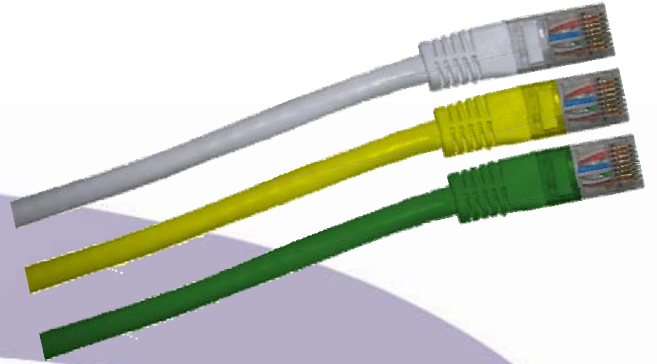
| PASS | Worst Margin | | Worst Value | |
|----------------------|--------------|-------|-------------|--------|
| | MAIN | SR | MAIN | SR |
| Worst Pair | 78-12 | 76-12 | 78-12 | 178-12 |
| ELFEXT (dB) | 21.4 | 21.3 | 20.5 | 20.5 |
| Frequency (MHz) | 202.0 | 202.0 | 242.5 | 242.5 |
| Limit (DB) | 17.2 | 17.2 | 15.6 | 15.6 |
| Worst Pair | 12 | 78 | 12 | 78 |
| PSELFEXT (dB) | 20.1 | 21.2 | 20.1 | 19.7 |
| Frequency (MHz) | 218.5 | 202.0 | 218.5 | 247.5 |
| Limit (dB) | 13.4 | 14.2 | 13.4 | 12.4 |

Ordering Information:

| S. # | Part Number | Description | Color | Unit | Packaging Details |
|------|----------------|---|-----------|------|-------------------|
| 1 | OZ276222-CAT5e | OZLINX Unscreened CAT5e Shuttered RJ45 Module/Jack | Off White | No | 1/Pk or 20/Pk |
| 2 | OZ276202-FPA | OZLINX Standard Dual Face Plate (Angled) for RJ45 Modules | White | No | 1/Pk or 2/Pk |
| 3 | OZ276202-FPS | OZLINX Standard Dual Face Plate (Straight) for RJ45 Modules | White | No | 1/Pk or 2/Pk |

Description:

OZLINX CAT5e patch cords are used for connecting the network equipment to patch panels and telecommunication outlets, and to cross connect between various applications and end users. The OZLINX Patch Cords and connectors provide a mated performance that exceeds Category 5e requirements.



OZLINX Patch Cords are available in different configurations i.e. 1M, 2M, 3M, 5M, & 10M lengths for use between equipment and distribution fields. These cords are used to easily interconnect equipment directly into the distribution field.

Product Features:

OZLINX CAT5e patch cords are:

- OZLINX CAT5e UTP patch cords are terminated on both ends with unscreened RJ45 plugs and a molded bend limiting boot.
- Color coding, easy to use, highly visible color clips
- Backward-compatible plug for high density installation and to reduce installation space requirements.
- Fulfill the latest testing specifications of the EIA/ TIA 568-A, amendment 4 (Patch Cord Qualification Test)
- Assembled with RJ45 plugs as per the IEC 60603-7
- Lengths from 1 to 20m available
- Impedance of 100 ohm
- PVC or LSZH outer jacket
- OZLINX Patch Cords are 4-pair 24AWG UTP cords
- New and improved compact design to improve connector and plug accessibility.
- Robust and installer-friendly plug design with proven contact reliability to reduce network operating costs.

Materials:

- Plug Housing: UL 94 V0-rate polycarbonate
- Contact Plating: 50 micro inch gold plated

Electrical Characteristics:

- Current Rating: 1.5 A (Maximum) @ 25°C
- Voltage Rating: 150 VAC (Maximum)
- Dielectric with standing Voltage: 1000 VAC, 1 min. (60 Hz)
- Insulation Resistance: 500 MO (minimum)

Mechanical Characteristics:

- Plug Tolerances and Dimensions: Compliant with IEC 60603-7 requirements

Patch Cord Characteristics:

- Inner conductor diameter: Stranded copper 24AWG
- Number of pairs: 4
- Screen Type Inner/Outer: Non
- Outer Jacket: PVC or LSZH
- Nominal diameter: 5.1mm
- Minimum bend radius: 25mm

Applications:

- Horizontal distribution or equipment terminations in telecommunications rooms and equipment rooms.
- Interconnection terminations in consolidation points.

Mechanical Characteristics:

- Operating Temperature Range: -25°C To +60°C
- Installation Temperature Range: -10°C To +60°C

Agency Compliances:

- UL and cUL
- TIA/EIA-568-B.2
- ISO/IEC 11801
- Third Party Certification: PDI Certified

Ordering Information:

| <i>S. #</i> | <i>Part Number</i> | <i>Description</i> | <i>Color</i> | <i>Unit</i> | <i>Packaging Details</i> |
|-------------|--------------------|--|--------------|-------------|--------------------------|
| 1 | OZ276240-PC5E | OZLINX Standard 1 Meter UTP CAT5e Patch Cord (White) | White | No | 1/Pk |
| 2 | OZ276241-PC5E | OZLINX Standard 1 Meters UTP CAT5e Patch Cord (Yellow) | Yellow | No | 1/Pk |
| 3 | OZ276260-PC5E | OZLINX Standard 3 Meters UTP CAT5e Patch Cord (White) | White | No | 1/Pk |
| 4 | OZ276263-PC5E | OZLINX Standard 3 Meters UTP CAT5e Patch Cord (Green) | Green | No | 1/Pk |

Head Office

3/8 Ayton Street, Sunshine North, Melbourne, VIC3020, Australia
 Tel: +61-3-931 2440 Fax: +61-3-931 2441